

OPTIONS

Select standard or custom grille light patterns to match any style window.

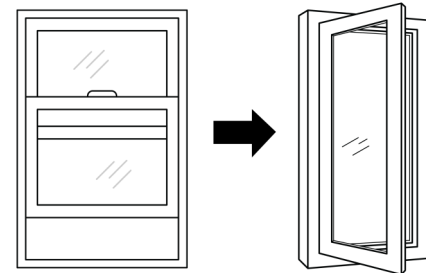
Configure to open partially or fully.

Set the swing to be right, left, or top (awning style).

Opt for configurations like egress hinges.



With the ENVIROGUARD™ Casement Insert, homeowners can have it all—beauty, full daylight view, and durability with ease of installation. Designed for remodels and restorations, Casement Inserts are replacement windows that fit into the opening left after the removal of an existing window. Save on replacement costs by keeping the perfectly good sill, head, and brick mould frame and replace only the operational parts of the window: the sash and the jamb.



Update your window from a double-hung to a Casement Insert in as little as 30 minutes and change the function and style of your windows. With more glass, you get more light. With a one-hand folding crank and levered multi-point locking system, you'll enjoy operational ease.

Casement Inserts are constructed of wood with an ENVIROGUARD™ cellular PVC split sash for the exterior side of the window. Cellular PVC is impervious to rot and insects, splinter and decay, and it is paintable. Casement Inserts use Super Spacer® Warm Edge Technology to dramatically minimize energy loss, condensation, and noise.



20 years on all wood components, 20 years on seals, 20 years on PVC components.*

Casement Inserts



**PRECISION
MILLWORKS, INC.**
www.precisionmillworks.com

Made in the USA with
American pride and craftsmanship.



The ENVIROGUARD™ Story

Most people don't worry about the durability of a window until it has to be replaced due to rot. Have peace of mind with Precision Millworks line of ENVIROGUARD windows and millwork because they **do not rot**.

Finishing

ENVIROGUARD™ cellular PVC windows, wood windows, and all millwork must be painted on the exterior and interior within a period of 30 days after installation for the warranty to be honored. Windows and millwork should be painted with standard oil base or latex paint using industry standard painting techniques after being cleaned.

WARNING: PMI recommends light paint colors on the LRV value scale of 57 or higher (black = 0 and white = 100) for our products. Dark paint colors (LRV value of ≤ 56) can generate high localized temperatures above 145°F in ENVIROGUARD products causing thermal expansion and contraction. If thermal expansion occurs, paint adhesion loss, blistering, and peeling could result, as can warping/distortion. If ENVIROGUARD components are painted with dark colors as defined above, the product warranty will be forfeited. Wood components can be painted a dark color without voiding the warranty. If, despite the above warning, you should choose to paint ENVIROGUARD components a dark color, a paint specifically designed for these applications **MUST** be used. Whichever paint manufacturer is chosen must be contacted to verify the paint's reflective properties and suitability with regard to painting cellular PVC. See complete finishing details and information at: PrecisionMillworks.com/Finishing

*20-20 Year Warranty

We warrant our glass against seal failure for 20 years. Wood components are warrantied against degradation for 20 years. ENVIROGUARD cellular PVC components are warrantied against rot and corrosion for 20 years. See complete warranty details on our website: PrecisionMillworks.com/Warranty

Outside	Rough Opening	Egress	Optional hinge
1/8 x 2/0	20 1/2" x 24 1/2"		
1/8 x 2/6	20 1/2" x 30 1/2"		
1/8 x 3/0	20 1/2" x 36 1/2"		
1/8 x 3/6	20 1/2" x 42 1/2"		
1/8 x 4/0	20 1/2" x 48 1/2"		
1/8 x 4/6	20 1/2" x 54 1/2"		
1/8 x 5/0	20 1/2" x 60 1/2"		
1/8 x 5/6	20 1/2" x 66 1/2"		
1/8 x 6/0	20 1/2" x 72 1/2"		
2/0 x 2/0	24 1/2" x 24 1/2"		
2/0 x 2/6	24 1/2" x 30 1/2"		
2/0 x 3/0	24 1/2" x 36 1/2"		
2/0 x 3/6	24 1/2" x 42 1/2"		
2/0 x 4/0	24 1/2" x 48 1/2"		
2/0 x 4/6	24 1/2" x 54 1/2"		
2/0 x 5/0	24 1/2" x 60 1/2"		
2/0 x 5/6	24 1/2" x 66 1/2"		
2/0 x 6/0	24 1/2" x 72 1/2"		
2/4 x 2/0	28 1/2" x 24 1/2"		
2/4 x 2/6	28 1/2" x 30 1/2"		
2/4 x 3/0	28 1/2" x 36 1/2"		
2/4 x 3/6	28 1/2" x 42 1/2"		
2/4 x 4/0	28 1/2" x 48 1/2"		
2/4 x 4/6	28 1/2" x 54 1/2"		
2/4 x 5/0	28 1/2" x 60 1/2"		
2/4 x 5/6	28 1/2" x 66 1/2"		
2/4 x 6/0	28 1/2" x 72 1/2"		**
2/6 x 2/0	30 1/2" x 24 1/2"		**
2/6 x 2/6	30 1/2" x 30 1/2"		**
2/6 x 3/0	30 1/2" x 36 1/2"		**
2/6 x 3/6	30 1/2" x 42 1/2"		**
2/6 x 4/0	30 1/2" x 48 1/2"		
2/6 x 4/6	30 1/2" x 54 1/2"		
2/6 x 5/0	30 1/2" x 60 1/2"		
2/6 x 5/6	30 1/2" x 66 1/2"	*	
2/6 x 6/0	30 1/2" x 72 1/2"	*	
3/0 x 2/0	36 1/2" x 24 1/2"		
3/0 x 2/6	36 1/2" x 30 1/2"		
3/0 x 3/0	36 1/2" x 36 1/2"		**
3/0 x 3/6	36 1/2" x 42 1/2"	*	
3/0 x 4/0	36 1/2" x 48 1/2"	*	
3/0 x 4/6	36 1/2" x 54 1/2"	*	
3/0 x 5/0	36 1/2" x 60 1/2"	*	
3/0 x 5/6	36 1/2" x 66 1/2"	*	
3/0 x 6/0	36 1/2" x 72 1/2"	*	
3/4 x 2/0	40 1/2" x 24 1/2"		
3/4 x 2/6	40 1/2" x 30 1/2"		**
3/4 x 3/0	40 1/2" x 36 1/2"	*	
3/4 x 3/6	40 1/2" x 42 1/2"	*	
3/4 x 4/0	40 1/2" x 48 1/2"	*	
3/4 x 4/6	40 1/2" x 54 1/2"	*	
3/4 x 5/0	40 1/2" x 60 1/2"	*	
3/4 x 5/6	40 1/2" x 66 1/2"	*	
3/4 x 6/0	40 1/2" x 72 1/2"	*	