

OPTIONS

Select standard or custom grille light patterns to match any style window.

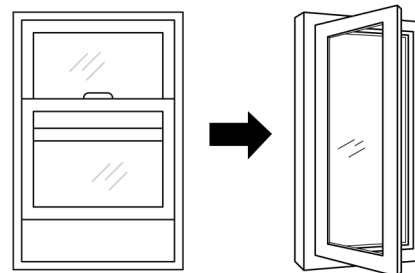
Configure to open partially or fully.

Set the swing to be right, left, or top (awning style).

Opt for configurations like egress hinges.



With the ENVIROGUARD™ Casement Insert, homeowners can have it all—beauty, full daylight view, and durability with ease of installation. Designed for remodels and restorations, Casement Inserts are replacement windows that fit into the opening left after the removal of an existing window. Save on replacement costs by keeping the perfectly good sill, head, and brick mould frame and replace only the operational parts of the window: the sash and the jamb.



Update your window from a double-hung to a Casement Insert in as little as 30 minutes and change the function and style of your windows. With more glass, you get more light. With a one-hand folding crank and levered multi-point locking system, you'll enjoy operational ease.

Casement Inserts are constructed of wood with an ENVIROGUARD™ cellular PVC split sash for the exterior side of the window. Cellular PVC is impervious to rot and insects, splinter and decay, and it is paintable. Casement Inserts use Super Spacer® Warm Edge Technology to dramatically minimize energy loss, condensation, and noise.



20 years on all glass and seals, and 25 years on PVC components.

Casement Inserts



The ENVIROGUARD™ Story

Have peace of mind with Precision Millworks line of ENVIROGUARD windows and millwork because they **do not rot**. Built using ENVIROGUARD technology and 100% PVC, our products are paintable like wood, with the traditional look and feel of real wood, yet they won't rot. ENVIROGUARD is used on the sash, sill, and all exterior parts.

Finishing

ENVIROGUARD cellular PVC windows and millwork should be painted with standard oil base or latex paint using industry standard painting techniques after cleaning. ENVIROGUARD product extrusions are cellular PVC, a vinyl-based composite. As such, they may be subject to thermal expansion and contraction at direct temperatures above 145°F. Extremely dark colors may accelerate this situation as they tend to absorb a greater amount of solar heat potentially causing warping/distortion—distortion of frame and sash components, paint adhesion loss, blistering, and peeling can all result.

WARNING: Painting any ENVIROGUARD cellular PVC product with a paint color that has an L value of 56 or darker (black = 0 and white = 100) will forfeit the product warranty. If, despite the above warning, you should choose to paint ENVIROGUARD products a dark color (as defined above), a paint specifically designed for these applications MUST be used. Contact the paint manufacturer to verify the paint's reflective properties and suitability with regard to painting cellular PVC. Precision Millworks Inc. is not liable for paint used on our cellular PVC components or the result of its use.

*Meets the following Egress Requirements. Escape or rescue windows shall have a minimum net clear openable area of 5.7 square feet. The minimum net clear openable height of 24", width of 20", and a finished sill height not more than 44" above the floor. Verify your local code requirements prior to ordering.

**Special order Egress hinge available and must be specified when ordering. Note: Washability gap is eliminated when Egress hinge is used.

Outside	Rough Opening	Egress	Optional hinge
1/8 x 2/0	20 1/2" x 24 1/2"		
1/8 x 2/6	20 1/2" x 30 1/2"		
1/8 x 3/0	20 1/2" x 36 1/2"		
1/8 x 3/6	20 1/2" x 42 1/2"		
1/8 x 4/0	20 1/2" x 48 1/2"		
1/8 x 4/6	20 1/2" x 54 1/2"		
1/8 x 5/0	20 1/2" x 60 1/2"		
1/8 x 5/6	20 1/2" x 66 1/2"		
1/8 x 6/0	20 1/2" x 72 1/2"		
2/0 x 2/0	24 1/2" x 24 1/2"		
2/0 x 2/6	24 1/2" x 30 1/2"		
2/0 x 3/0	24 1/2" x 36 1/2"		
2/0 x 3/6	24 1/2" x 42 1/2"		
2/0 x 4/0	24 1/2" x 48 1/2"		
2/0 x 4/6	24 1/2" x 54 1/2"		
2/0 x 5/0	24 1/2" x 60 1/2"		
2/0 x 5/6	24 1/2" x 66 1/2"		
2/0 x 6/0	24 1/2" x 72 1/2"		
2/4 x 2/0	28 1/2" x 24 1/2"		
2/4 x 2/6	28 1/2" x 30 1/2"		
2/4 x 3/0	28 1/2" x 36 1/2"		
2/4 x 3/6	28 1/2" x 42 1/2"		
2/4 x 4/0	28 1/2" x 48 1/2"		
2/4 x 4/6	28 1/2" x 54 1/2"		
2/4 x 5/0	28 1/2" x 60 1/2"		
2/4 x 5/6	28 1/2" x 66 1/2"		
2/4 x 6/0	28 1/2" x 72 1/2"		**
2/6 x 2/0	30 1/2" x 24 1/2"		**
2/6 x 2/6	30 1/2" x 30 1/2"		**
2/6 x 3/0	30 1/2" x 36 1/2"		**
2/6 x 3/6	30 1/2" x 42 1/2"		**
2/6 x 4/0	30 1/2" x 48 1/2"		
2/6 x 4/6	30 1/2" x 54 1/2"		
2/6 x 5/0	30 1/2" x 60 1/2"		
2/6 x 5/6	30 1/2" x 66 1/2"	*	
2/6 x 6/0	30 1/2" x 72 1/2"	*	
3/0 x 2/0	36 1/2" x 24 1/2"		
3/0 x 2/6	36 1/2" x 30 1/2"		
3/0 x 3/0	36 1/2" x 36 1/2"		**
3/0 x 3/6	36 1/2" x 42 1/2"	*	
3/0 x 4/0	36 1/2" x 48 1/2"	*	
3/0 x 4/6	36 1/2" x 54 1/2"	*	
3/0 x 5/0	36 1/2" x 60 1/2"	*	
3/0 x 5/6	36 1/2" x 66 1/2"	*	
3/0 x 6/0	36 1/2" x 72 1/2"	*	
3/4 x 2/0	40 1/2" x 24 1/2"		
3/4 x 2/6	40 1/2" x 30 1/2"		**
3/4 x 3/0	40 1/2" x 36 1/2"	*	
3/4 x 3/6	40 1/2" x 42 1/2"	*	
3/4 x 4/0	40 1/2" x 48 1/2"	*	
3/4 x 4/6	40 1/2" x 54 1/2"	*	
3/4 x 5/0	40 1/2" x 60 1/2"	*	
3/4 x 5/6	40 1/2" x 66 1/2"	*	
3/4 x 6/0	40 1/2" x 72 1/2"	*	